

# Assembly instructions

## Important Notes

(Please read all assembly instructions before proceeding)

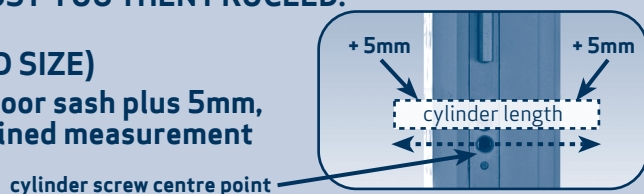
FSD Innovative  
Hardware LLP

### CHECK THE FOLLOWING BEFORE DRILLING COMMENCES.

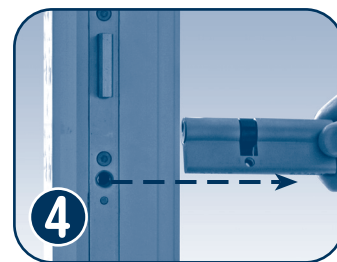
1. Check by removing the locking mechanism that the fixing holes on the handle do not interfere with your current locking mechanism (use the template provided on reverse of handle box for clarity)
2. Check that you have the required cylinder size to suit the new handle (see notes below)  
**ONLY WHEN YOU HAVE CHECKED THE ABOVE MUST YOU THEN PROCEED.**

### CYLINDER SIZE (HOW TO CALCULATE THE REQUIRED SIZE)

Measure from cylinder screw centre to outface of door sash plus 5mm, you must measure both sides of the centreline (combined measurement equals the correct cylinder length).



## Removal of existing handle and cylinder



1. With the door in the open position remove the existing handle set by unscrewing the internal handle from the door leaf.
2. Remove the handle and lock spindle bar.
3. To remove the cylinder; remove the central cylinder fixing screw located in the centre of the door lock directly under the dead lock on the existing door sash.
4. Push the cylinder through the door leaf and remove totally.

## Installation of new cylinder and handle set

1. Firstly place central spindle bar into spindle hole location.
2. Use template supplied on **reverse of handle box for clarity.**
3. Locate the template over the lock spindle ensuring that the template is the right way up.
4. Using a pencil mark through the template the centrelines of the handle fixing holes and cylinder position enlarged slot.

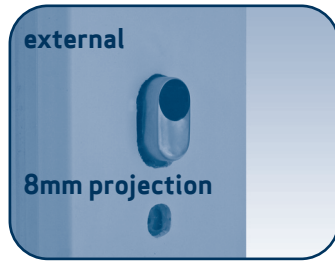


**(The cylinder slot may already be of a suitable cut out size to fit the cylinder jacket)**

5. Now drill 10mm clearance holes through the door sash for the handle fixings.
6. Enlarge the cylinder jacket slot to the marked dimensions if required.
7. Locate the cylinder jacket - now push the cylinder jacket from the outside into the slotted aperture.  
**Note: ensuring to leave 8mm projection remaining to the outside.**
8. From the inside locate the new cylinder into the door sash. **(See cylinder size notes - paragraph 1)**  
**Note: ensure that the cylinder is pushed tight up against the cylinder jacket.**

(continued overleaf)

## Installation of new cylinder and handle set (CONTINUED)



9. Fix cylinder into position with fixing screw provided with the cylinder.

**Note: - ensure that you do not exceed 10mm maximum projection overall cylinder jacket through the door sash profile both inside and outside.**

10. Locate new security handle set and before fitting (external handle only) remove the centre screw cover cap to expose the secret fixing hole beneath the cover cap. Now slide the handle sets over the central spindle with the fixing holes on the internal handle to the inside of the door.

11. Fix the handles together through the door using M5 counter sunk head screws provided

**Note:** Remember to fix the secret fixing screw using No.8 x 25mm (max) CSK head self tapping PVC screw before replacing the cover cap.

12. Now tighten the grub screws both inside and outside to secure the handles to the lock spindle.



## Handle Centre Adjustment

1. Release the cover cap from the handle back plate.

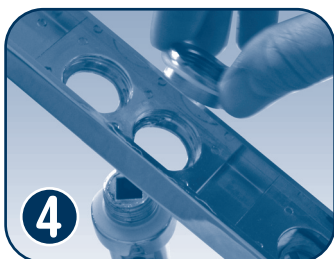
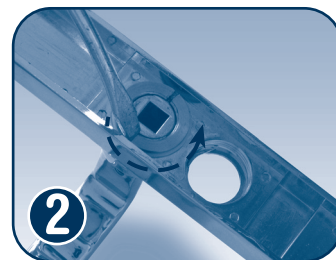
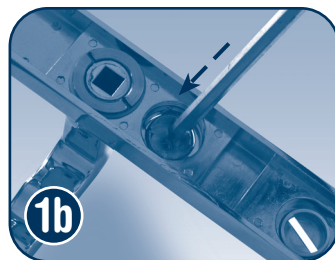
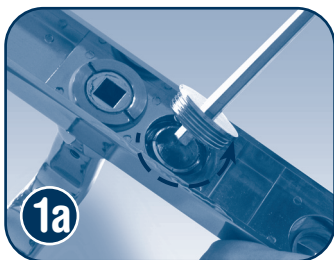
2. Unscrew the handle by releasing the locking nut on the inside of the handle back plate.

3. Remove the handle from the back plate.

4. Push the handle including the nylon washer through the new location hole and tighten the locking nut.

**Note: - you will need to apply a loctite adhesive between the locking nut and the handle screw on the inside face of the back plate.**

5. Now replace the cover cap in the hole aperture.



**Tel 0845 0940 655 Fax 0845 0940 656**

FSD Works, Hopbine Avenue, West Bowling Bradford, West Yorkshire BD5 8ER ENGLAND  
Email [enquiries@fsdinnovation.com](mailto:enquiries@fsdinnovation.com) Web [www.fsdinnovation.com](http://www.fsdinnovation.com)